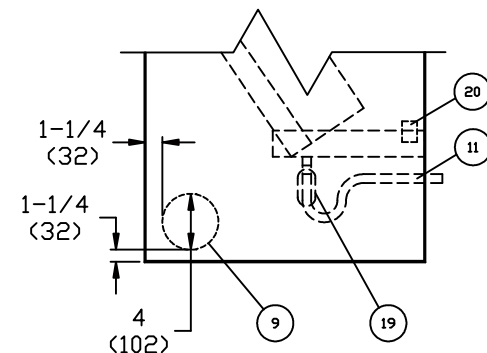
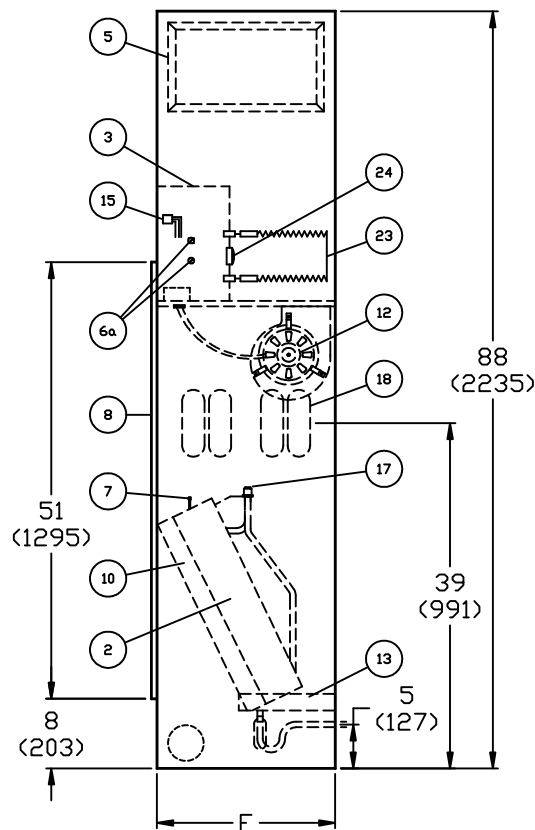
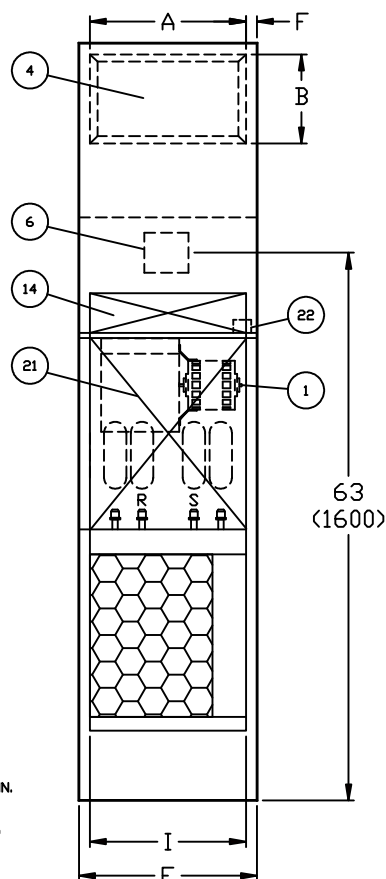


•RISER KNOCKOUT DIMENSIONS•
(MEASURED FROM CENTERLINE OF KO)
FOR SHIPPED LOOSE RISERS



REVISION HISTORY		
REV	DATE	ECN
-	09/24/08	08-0476
A	03/04/09	09-0302
B	04/28/09	09-0573
C	02/24/10	10-0227
D	04/06/10	10-0465
E	08/23/10	10-1256

NOTES:

- UNITS ARE FABRICATED OF GALVANIZED STEEL WITH A 16 GA GALVANIZED FAN DECK.
- THERMOSTATS SHIPPED LOOSE FOR FIELD INSTALLATION.
- BLOWER, MOTOR, VALVES, COIL, AND FILTER ARE ACCESSIBLE THROUGH THE RETURN AIR OPENING.
- UNIT AND CONTROL BOX ARE INSULATED WITH 1/2" (13) COATED GLASS FIBER INSULATION.
- ALL RISERS WILL SHIP SEPARATELY FROM UNITS
- DRAIN KNOCK-OUTS ON THREE SIDES OF CABINET
- HOSES SHIP W/UNIT BUT ARE NOT SHOWN.
- THREADED FITTINGS MUST BE FIELD TIGHTENED AND LEAK TESTED
- DIMENSIONS ARE IN INCHES, DIMS IN () ARE IN MM.
- RETURN AIR PANEL NOT SHOWN.

ITEM	DESCRIPTION	QTY
1	MOTOR, 3 SPEED, PSC, W/ GC	1
2	COIL 1/2"(13) O.D. COPPER TUBE	1
3	CONTROL BOX	1
4	SUPPLY AIR OPENING(S) (STITCH CUT)	5
5	DUCT COLLAR EXTENSION (SIDE 1/2"(13), TOP 1"(25))	5
6	CONTROL OPENING K.D. (SURFACE MOUNT STAT)	1
6a	KNOCKOUT (FOR OPTIONAL REMOTE MOUNTING) /SIDE	2
7	AIR VENT, MANUAL	1/2
8	RETURN AIR OPENING	1
9	OUTSIDE AIR KNOCKOUT(S) (ON EACH SIDE PANEL)	1
10	FILTER, THROWAWAY, 1"(25), (F&I)	1
11	FLEXIBLE DRAIN TUBE/P-TRAP	1
12	BLOWER	1
13	DRAIN PAN	1
14	ACCESS PANEL (CONTROL BOX)	1
15	MOLEX CONNECTOR FOR FIELD INSTALLED STAT	1
16	MULTIPLE ELECTRICAL KNOCKOUTS	-
17	1/2"(13) SWT X 37.5" FLARE ADAPTER	2/4
18	RISER KNOCKOUTS (THREE SIDES)	4
19	DRAIN KNOCKOUT (THREE SIDES)	1
20	OPTIONAL FLOAT SWITCH	1
21	ACOUSTICAL SERVICE ACCESS PANEL	1
22	OPTIONAL SERVICE SWITCH	1
23	STRIP HEATER	1
24	LIMIT SWITCH, (F&I)	1

TITLE
MUY UNIT W/ ELEC HEAT

MODEL
MUY

JOB NUMBER

JOB NAME

DRAWN BY
D.MCGOUGH

DRAWING NUMBER
I100-90007747



REVISION
E

SHEET
1 OF 1

MODEL	SIDE SUPPLY			TOP SUPPLY			DIMENSIONS				FILTER SIZE	
	A	B	SIZE	C	D	SIZE	E	F	H	I		
MUY03 MUY04	14 (356)	12 (305)	14X12	14 (356)	10 (254)	14X10	17 (432)	3 (76)	1-1/2 (38)	14 (356)	12-1/2 X 24-1/4 X 1 (318X616X25)	
MUY06 MUY08	18 (457)	12 (305)	18X12	16 (406)	12 (305)	16X12	20 (508)	1 (25)	2 (51)	18 (457)	16-1/4 X 26-3/4 X 1 (413X679X25)	
MUY10 MUY12	22 (559)	16 (406)	22X16	18 (457)	16 (406)	18X16	24 (610)	1 (25)	3 (76)	22 (559)	20-1/2 X 29-1/4 X 1 (521X743X25)	